

Certificate of Analysis

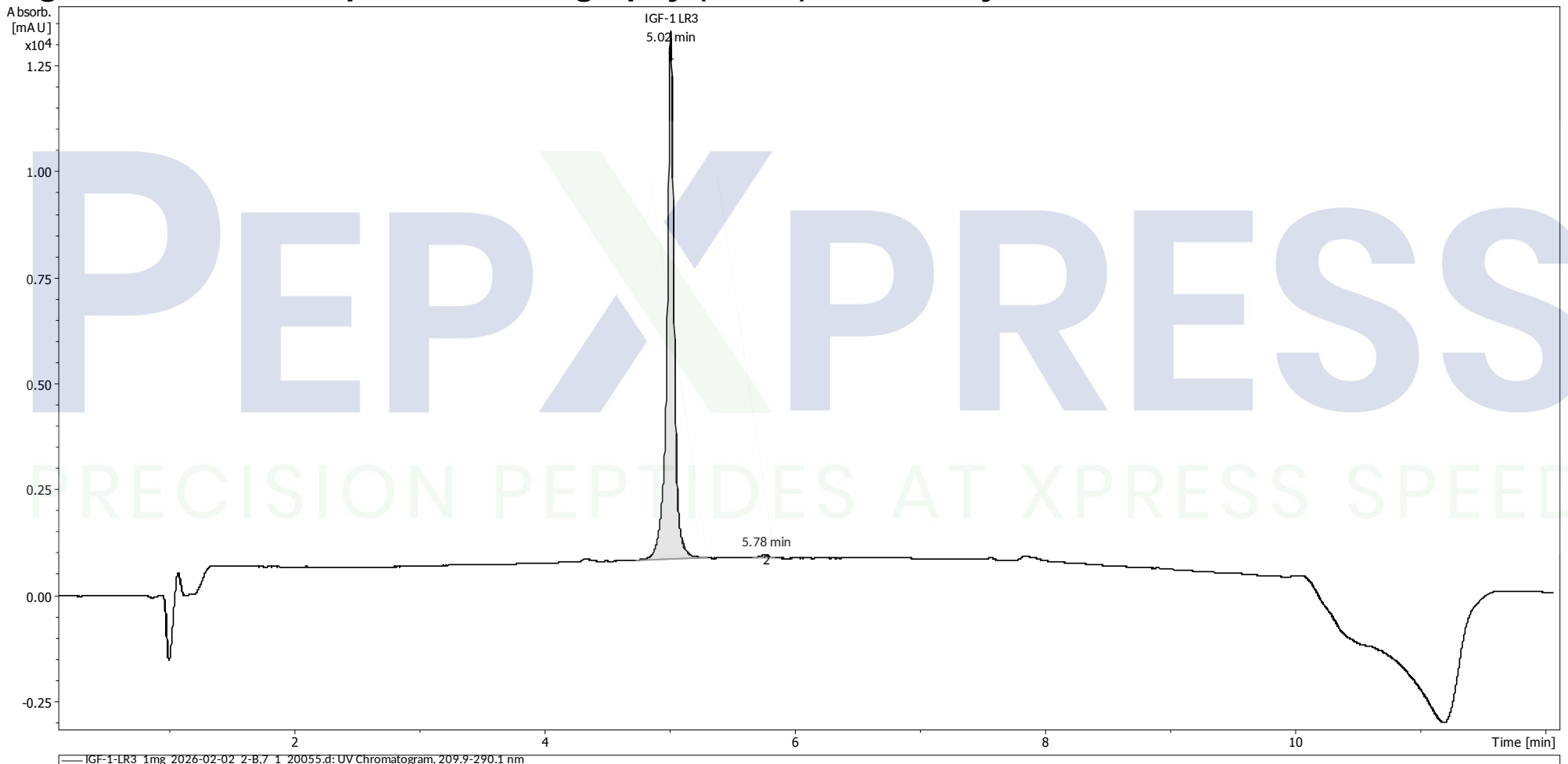
IGF-1 LR3 1mg

Long arginine 3 Insulin-like growth factor

Compound : IGF-1 LR3 **Client** : PepXpress
Lot number : 2026-02-02
Analysis date : 2026-02-16
Purity % : 99.12%
Method : HPLC-UV-MS

CAS 143045-27-6

High Performance Liquid Chromatography (HPLC) UV – Purity Test



PEAK LIST		Number of detected peaks: 2		
	Time (min)	Area	%Area	
1	5.02	4.99E+04	99.12	IGF-1 LR3
2	5.78	4.44E+02	0.88	

Analysis Performed by
 Ken Pendarvis, ChE
 Analytical Chemist
 MZ Biolabs
contact@mzbiolabs.com



2026-02-23

Note: Injectable peptides may contain salts and sugars to aid in solubility and act as pH buffers. These are not normally detected using UV and are not considered impurities.

IGF-1 LR3 1mg

Long arginine 3 Insulin-like growth factor

CAS 143045-27-6

Mass Spectrometry (MS) – Identity Test

Identity confirmed using HPLC-MS

Molecular weight calculated using base peak m/z values from mass spectrum

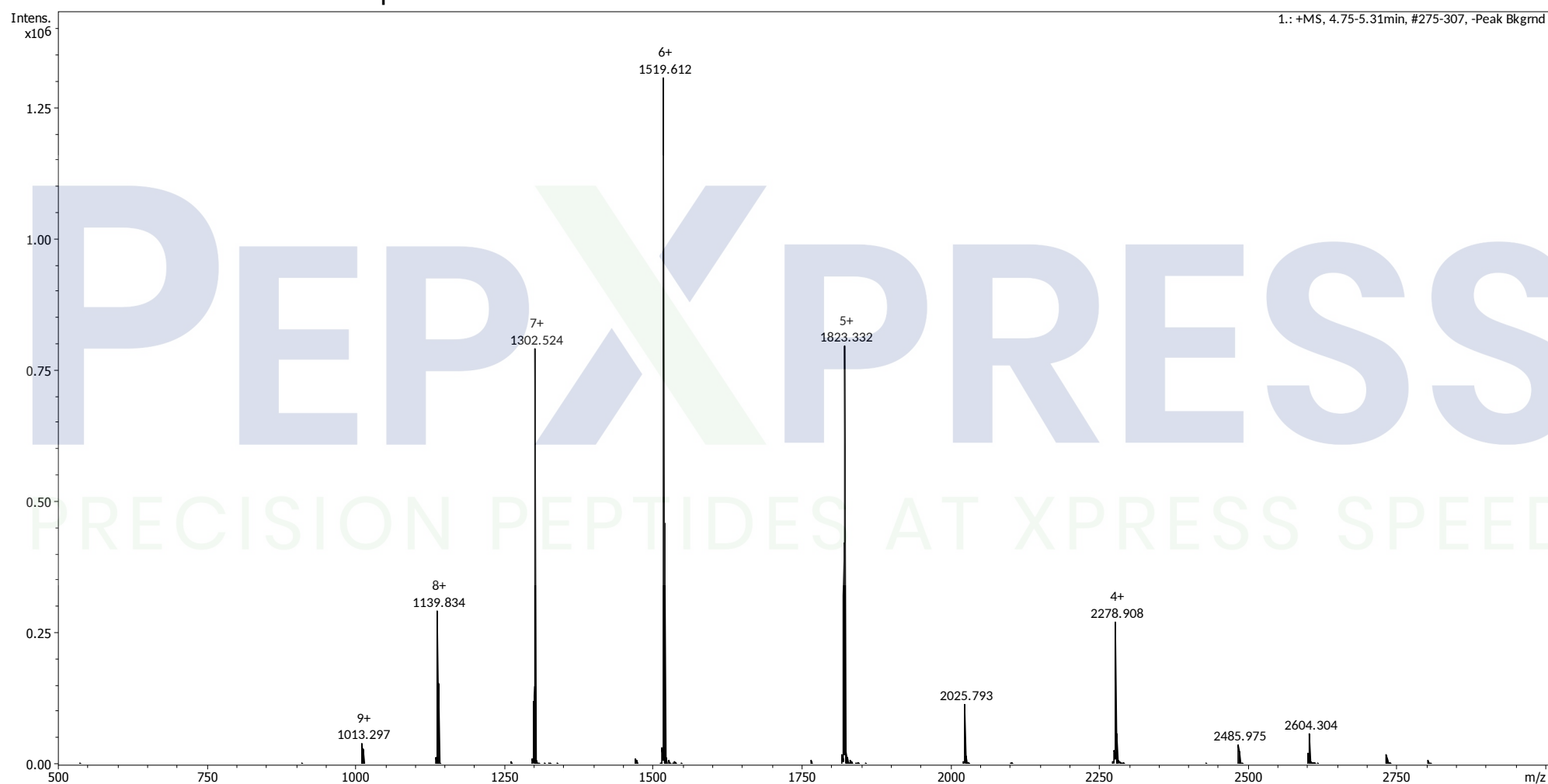
Expected average mass : 9111.40 Da

Measured base peak mass : 9110.67 Da

Molecular weight confirmed

Note : The dominant isotopic peak (base peak) shown in the spectrum below can be used to approximate the average molecular weight frequently reported by vendors and databases as a secondary means of confirmation.

Recorded MS spectrum



Analysis Performed by
Ken Pendarvis, ChE
Analytical Chemist
MZ Biolabs
contact@mzbiolabs.com



2026-02-23